

King Offa Primary Academy

SEND POLICY 2024-25

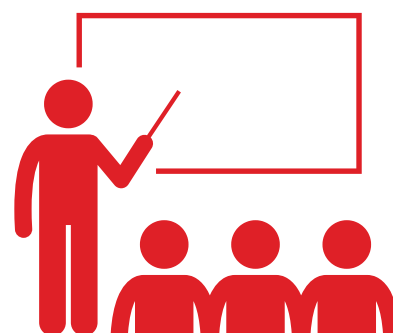
Knowledge - Opportunity - Pride - Achievement

UNIVERSAL OFFER

HIGH QUALITY TEACHING

At King Offa we are committed to delivering a broad and balanced curriculum. High quality teaching means that teachers plan, personalise and adapt learning experiences to meet the needs of all pupils. This ensures that teaching at King Offa is inclusive for all.

All staff are responsible for ensuring that this provision is delivered in every classroom. The class teacher, supported by the teaching assistant team and SENCO, is responsible for ensuring adjustments are made to suit the needs of the children.



If a parent/carer has a concern about their child they should, in the first instance, contact the child's class teacher.

TARGETED SUPPORT

If a child is not making progress or achieving age related expectations, despite quality first teaching, they may require a short term, specific and time bound intervention to overcome their barrier to learning. These interventions (provisions) are organised by the class teacher and delivered by staff from within the school.

We monitor the interventions and the progress made within them on our ProvisionMap software. The SENCo is able to see an overview of all provisions happening within the school. This is part of our graduated approach and Assess, Plan, Do, Review cycle.

If the expected progress has not been made at the point of review, the class teacher raises their ongoing concerns with the SENCo and parents/family. Further assessments may be arranged. A meeting is held to decide upon outcomes and provision and the APDR cycle begins again. If the provision is additional to or different from their peers, the child is added to the SEND register.

INDIVIDUALISED SUPPORT

PUPIL PROFILE

Outlines the strengths and needs of the child, alongside the provision, resources and strategies needed to support their progress.

KEY CONTACTS

Assistant Headteacher for Inclusion (SENCo):
Mrs Tess Gale
tgale
@kingoffapa.org

LAB SEN: Gina Porter

Please contact the school office to make an appointment:
office@kingoffapa.org
or 01424 211548

INDIVIDUAL SUPPORT PLAN

For children with a higher level of need, the class teacher creates an individual support plan (ISP) written and reviewed three times per year. These include long term outcomes, short term targets and agreed provisions, strategies and resources. ISPs are discussed and shared with parents/ carers at the end of Term 2, 4 and 6. Specialist referrals may be made to gain support and advice from outside agencies

EDUCATION HEALTH CARE PLAN

In a small number of cases, the SENCo, in consultation with outside agencies; parents/carers and the class teacher applies for an EHC needs assessment from the local authority. This application is made when the criteria from the East Sussex SEN Matrix are met.

Pupils on the SEN register are involved with their provision by encouragement to co-create their profile or ISP.