



Welcome Note

At King Offa, we value the partnership we have with our parents community and know that consistent and regular communication is a part of this. We hope that our weekly bulletin will share key information and updates related to our school each week, to help keep our families up-to-date

King Offa Primary Academy Open Events
Starting school in September 2026 - please join us for one of our open events!!

OPEN EVENING

Monday 20th October 5:30pm - 6:30pm

TOURS OF KING OFFA PRIMARY ACADEMY
Wednesday 5th November

9am, 9:30am, 10am or 10:30am

Tuesday 11th November

9am, 9:30am, 10am or 10:30am

To book a slot, please scan the QR code!



IMPORTANT DATES & REMINDERS

School Photos - Monday 20th October 25

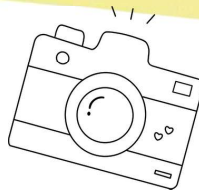
Year 2 Historic Workshop - Tuesday 21st October 25

Inset Day - Friday 14th October 25

Tricky Mornings Coffee session - Weds 5th Nov 25

Half Term - Mon 26th - Friday 31st October 25

Year 6 PGL - 9th March - 11 March 26



School Photos on Monday!

Please can all children wear their full school uniform.

Congratulations to classes with the highest attendance for the week beginning 13th October 2025.

100%
Club

Pebble



Seacole



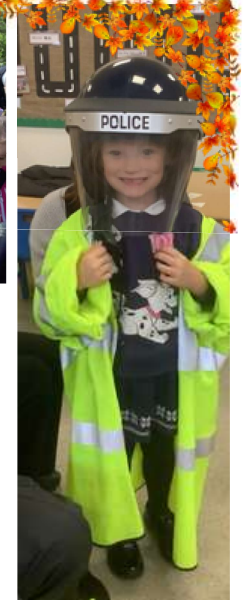
Columbus



WEEKLY BULLETIN



17th October 2025



Reception classes enjoyed a visit from a Paramedic team this week and have enjoyed exploring on their Autumn walk.



CLUBS & ACTIVITIES

Monday

Sama Karate - 3.10 -4pm

To sign up contact:
info@samamartialarts.co.uk

Tuesday

Creation Station - 3.10-4.20pm

[Creation station booking link](#)

KS 2 Hall - Years 3,4 ,5 & 6

Musical Theatre- 3.10pm - 4.00pm

Wednesday

Country Dancing -3.10 - 4pm

KS 2 Hall - Years 3,4 ,5 & 6

Thursday

Skiltek - Multi Sport - 3.10pm - 4pm

Years 3,4,5 & 6

[Skiltek booking link](#)

Friday

Skiltek - Football - 3.10pm -4pm

Years - Reception,1 & 2

Zumba - 3.10pm - 4pm

[Zumba booking link](#)

FOOD FESTIVAL TRADITIONAL Week 3

LUNCHTIME

	MAIN EVENT	MEAT-FREE MAGIC	RAINBOW ALLEY	BIG TOPPING	DESSERT TROLLEY
MONDAY	BBQ Sweetcorn Pizza Slice with Wedges	Macaroni Cheese	Green Salad	Beans, Cheese or Tuna Mayo	Strawberry Frozen Yoghurt
TUESDAY	Cheesy Meatball Bake Topped with Mash	Veggie Shepherdies Pie	Green Beans	Beans, Cheese or Tuna Mayo	Coconut Cookie
WEDNESDAY	Roast Chicken, Stuffing, Skin on Roasties and Gravy	Cheese and Potato Pie with Skin on Roasties	Carrots and Peas	Beans, Cheese or Tuna Mayo	Peach and Pineapple Jelly
THURSDAY	Lasagne	Vegetable Ratatouille with Rice	Sweetcorn	Beans, Cheese or Tuna Mayo	Toffee Apple Crumble and Custard
FRIDAY	Golden Fish Fingers and Chips	Vegetable Fingers and Chips	Baked Beans	Beans, Cheese or Tuna Mayo	Broccoli (Broccoli & Cusick Mix)

PASTA TWIRLER
AVAILABLE EVERY DAY
Hot Pasta topped with Homemade Tomato Sauce & Cheese

New PE Days PE Timetable New PE Days

Monday	Year 5
Tuesday	Years 2 and 3
Wednesday	
Thursday	EYFS, Years 1 and 6
Friday	Year 4

King Offa Primary School

'Your Mornings Tricky?'

Come along and find out helpful top tips!

The me and my mind team welcome you to our free 1.5 hour coffee morning session, please come along and join other parents and carers to relax have a coffee and learn some top tips!

...and make that 'morning school run' less stressful and more successful!!!

Date: Wednesday 5th November 2025

Time: 8.45am -10.30am

For more information speak to Tess Gale

We look forward to seeing you there

(please book your place by scanning the QR code)



A helping hand with your mental health
me & my mind
East Sussex Mental Health Support Team

What Parents & Educators Need to Know about WHATSAPP

AGE RESTRICTION
13+

WHAT ARE THE RISKS?

WhatsApp is a free messaging service owned by Meta which allows users to send text and voice messages, make video calls, share multimedia – such as images, videos, documents and polls – and have group chats. WhatsApp messages are encrypted, meaning only the sender and the recipient can view what is sent. While this privacy may sound attractive on paper, this app comes with several associated risks that must be considered – especially for younger users.

GROUP CHATS

Group chats let friends talk together but can pose problems for young users. They might feel excluded – like discovering events they weren't invited to. Hurtful comments can also escalate quickly, as more people join in, amplifying the impact through a wider audience.

EVOLVING SCAMS

WhatsApp's popularity makes it attractive to scammers. Tactics include impersonating a child in an 'emergency' to request money, or triggering a login code, then pretending to be WhatsApp and asking for it – giving them access to private messages and personal data.

CHANNELS

'Channels' let users follow topics anonymously, interacting only through polls or emoji reactions. However, fake channels can mimic real ones, spreading misinformation, hate speech, or phishing for personal data. WhatsApp may also collect and share channel-following info with third parties, raising privacy issues.

DISAPPEARING MESSAGES

Disappearing messages help share sensitive info, but young people may wrongly assume they're fully private. Senders can opt for their message to vanish after 24 hours, 7 days, or 90 days – or for media, after one view. However, recipients can still save them by bookmarking or taking screenshots, reducing their privacy.

FAKE NEWS

WhatsApp's simplicity makes sharing news quick – accurate or not. To help curb misinformation, messages forwarded over five times now show a 'Forwarded many times' label with a double arrow. This alerts users that the message isn't original and may be unreliable.

CHAT LOCK

The new 'Chat lock' feature lets users store specific messages in a separate passcode- or biometrically-protected folder. While useful for privacy, it could be misused by younger users to hide conversations or content they know parents and educators might find inappropriate, including age-restricted material.

VISIBLE LOCATION

WhatsApp's 'live location' feature helps friends meet up or parents check a child's route home. However, anyone in a child's group chats can track their location, potentially revealing their home address or regular travel patterns to strangers.

AI INTEGRATION

Meta AI on WhatsApp poses risks to children, including exposure to misinformation, inappropriate content, and data privacy issues. AI responses may be inaccurate, and kids might share personal information unknowingly. It can also hinder critical thinking by offering ready-made answers.

Advice for Parents & Educators

EMPHASISE CAUTION

Encourage children to treat unexpected messages with caution. Get them to consider, for example, whether it sounds like something a friend or relative would really send them. Make sure they know never to share personal details over WhatsApp, and to be wary of clicking on any links in messages. Setting up two-step verification adds a further layer of protection to their WhatsApp account.

THINK BEFORE SHARING

Help children understand why it's important to stop and think before posting or forwarding something on WhatsApp. It's easy – and all too common – for content sent to one user to then be shared more widely, and even publicly on social media. Encourage them to consider how an ill-judged message might damage their reputation or upset a friend who sent something to them in confidence.

ADJUST THE SETTINGS

It's wise to change a child's WhatsApp settings to specify which of their contacts can add them to group chats without needing approval. To do this, go to 'Privacy', then 'Groups'. You can give permission to 'My Contacts' or 'My Contacts Except...'. Additionally, if the child needs to use 'live location', emphasise that they should enable this function for only as long as they need – and then turn it off.

CHAT ABOUT PRIVACY

Have a conversation with youngsters about how they're using WhatsApp, emphasising that it's for their own safety. If you spot a 'Locked Chats' folder, you might want to talk about the sort of messages that are in there, who they're with and why they have been hidden. Also, if a young user has sent any 'view once' content, discuss their reasons for using this feature.

Meet Our Expert

Dr Claire Sutherland is an online safety consultant, educator and researcher who has developed and implemented anti-bullying and cyber safety policies for schools. She has written various academic papers and carried out research for the Australian Government comparing internet use and sexting behaviour of young people in the UK, USA and Australia.



#WakeUpWednesday

The National College

Source: See full reference list on guide page at: <https://nationalcollege.com/guides/whatsapp-2025>